

Harness the Power of Innovation

The Activforce 2 is a patented strength and angle measurement platform that utilizes advanced technology to collect and track real-time, objective data, improving efficiency, increasing client retention and driving better outcomes.

activforce2

An Affordable & Accurate Solution

At a fraction of the cost of other leading dynamometers, Activforce 2 offers a portable, highly accurate and easy-to-use solution that delivers quantifiable results.



Increase Revenue & Retention

A recent study shows progress data generated by Activforce 2 reliably increases the number of average visits per client, improves compliance, and decreases cancellation rates, motivating clients to become more engaged in their treatment program.



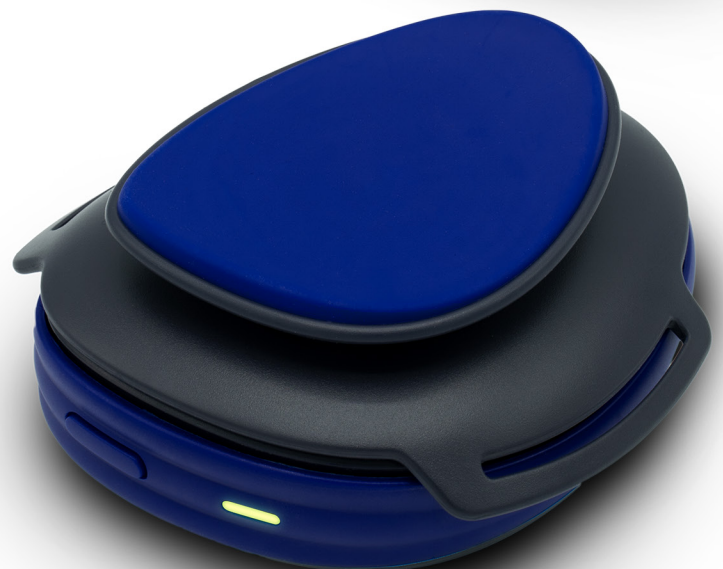
Drive Better Outcomes

A digital dynamometer and inclinometer in one, Activforce 2 enables physical therapists to drive better outcomes by creating and prescribing recovery regimens supported by accurate, conclusive data.



Increase Operational Efficiency

Bluetooth-enabled, portable and easy to use, Activforce 2 is an efficient way to capture client data in order to increase the effectiveness of treatment and decrease churn. At the end of each session, a report summary can be sent to your inbox and attached to your EMR.



For more information, visit www.LifeMax.co.za/Activforce

activforce2

Powerful Technology in a Portable Package

Make better clinical treatment decisions
Improve client education & compliance

The Activforce platform allows clinicians to:

Accurately Measure

Active & passive range of motion (AROM & PROM)

Peak force

Average force

Force over time

Force/weight ratio

Muscle symmetry

Neuromuscular deficits

Track & Treat

Results in real time

ROM progress

Strength progress

Data from test session reports delivered to your inbox

Neuromuscular control with bio-feedback



The Activforce 2 Kit includes

- Device & locking mechanism for supporting future accessories
- Standard shell attachment
- Cylindrical attachment for angular body parts
- Hand and leg straps to hold the device securely
- Specialized belt for pull measurement
- Custom carrying case

Specifications

Weight 131 gr / 4.6 oz

Length 95 mm / 3.7 in

Width 78 mm / 3.1 in

Height 33 mm / 1.3 in

Connectivity Bluetooth 4.1
(Frequency: 2402 - 2480 MHz)

Force Range 90 kg / 200 lb

Force Accuracy Within ± 1.4 lb
(+5% of the applied force)

Max Load 110 kg / 250 lb

System Requirements
iOS 11.4+ & Android 8+

For more information, visit www.LifeMax.co.za/Activforce